



THE BREEZE II



THE BREEZE II Model number: 55SSP28764AH18

4 beds • 2 baths • 2128 sq.ft. • 28' width • 76' depth

Our home building facilities invest in continuous product and process improvements. Plans, dimensions, features, materials, specifications and availability are subject to change without notice or obligation. Renderings and floor plans are representative likenesses of our homes and may differ from the actual homes. We invite you to tour a Home Center near you and inspect the highest value in quality housing available or call (509) 452-9228 to speak with a Home Consultant. Copyright 2017, CMH. All rights reserved.

<https://www.claytonyakimavalley.com>

CLAYTON HOMES-UNION GAP

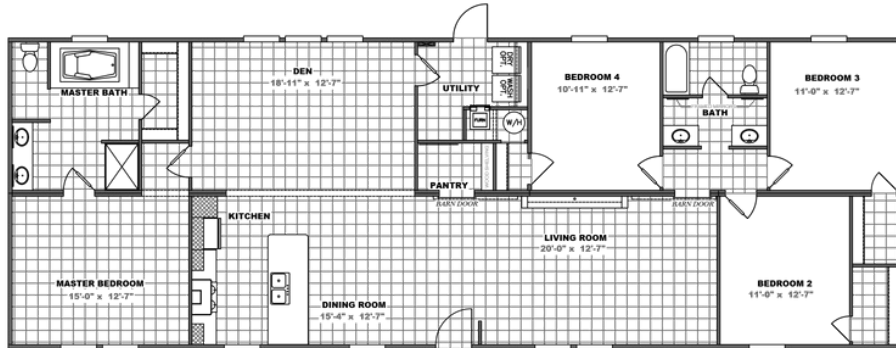
2010 RUDKIN ROAD
UNION GAP, WA 98903

Monday - Thursday: 9am to 6pm
Friday: 9am to 6pm
Saturday: 9am to 5pm
Sunday: Closed

(509) 452-9228



THE BREEZE II



THE BREEZE II Model number: 55SSP28764AH18

4 beds • 2 baths • 2128 sq.ft. • 28' width • 76' depth

Our home building facilities invest in continuous product and process improvements. Plans, dimensions, features, materials, specifications and availability are subject to change without notice or obligation. Renderings and floor plans are representative likenesses of our homes and may differ from the actual homes. We invite you to tour a Home Center near you and inspect the highest value in quality housing available or call (509) 452-9228 to speak with a Home Consultant. Copyright 2017, CMH. All rights reserved.

<https://www.claytonyakimavalley.com>

CLAYTON HOMES-UNION GAP

2010 RUDKIN ROAD
UNION GAP, WA 98903

Monday - Thursday: 9am to 6pm

Friday: 9am to 6pm

Saturday: 9am to 5pm

Sunday: Closed

(509) 452-9228